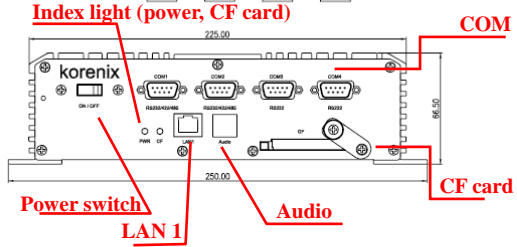
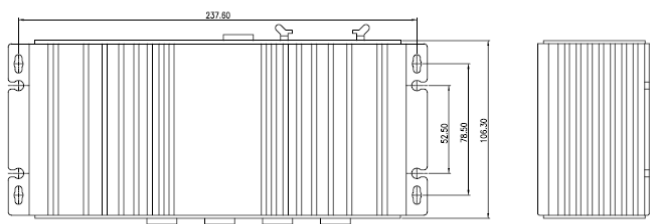
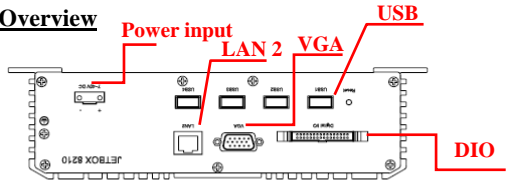


Jetbox 8210
Quick Installation Guide (WinCE)
0.9.070912

Packing List

- JetBox 8210
- Quick Installation Guide
- Documentation and Software CD-ROM

Overview



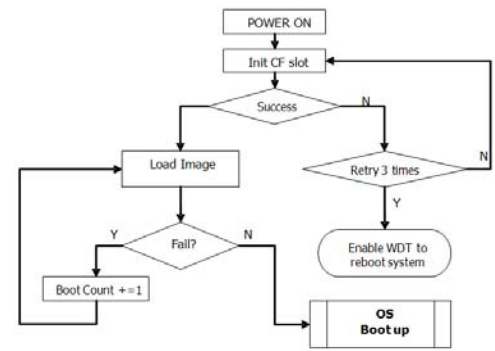
Dimension: 250(W) x 66.5(H) x 106.3(D)mm
Net weight: 1.07kg
Operating Temp: -15°C ~ 70°C, 5 to 95% RH

Power Supply:
 DC input: 7VDC ~ 40 VDC, (-40VDC) or 48VDC (-48VDC) or
 AC input: 100VAC ~ 240VAC@50-60Hz

Mounting JetBox 8210 (Wall or Cabinet)
 The two metal brackets of JetBox 8210 (with 2 screws per bracket) can be used to attach it to a wall, or the inside of a cabinet.

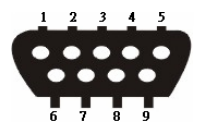
Power Connector
 Connect the DC power line to JetBox 8210's DC terminal block (or 100~240VAC power jack) and turn on the **power switch**. If there power is properly supplied, the **power LED** will show a solid red color when the OS is ready.

Start up (system on CompactFlash): File formats: FAT12, FAT16
 Users insert Korenix CF card (Linux or WinCE) and power on JetBox8210, and the system will be ready and execute the applications in the [autorun list](#) automatically.

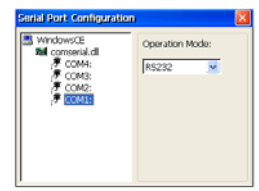


You can control JetBox 8210 directly under WinCE environment by connecting a monitor with JetBox 8210 through **VGA** port and a mouse though **USB** port.

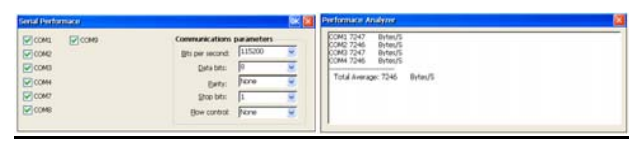
PIN Assignment & Customized Control Applets (in \My Device\Control Panel)
RS232/422/485 with DB9 connector



Pin No.	RS-232	RS-422	RS-485
1	DCD	TxD-(A)	TxD-(A) Data-(A)
2	RxD	TxD+(B)	TxD+(B) Data+(B)
3	TxD	RxD+(B)	RxD+(B)
4	DTR	RxD-(A)	RxD-(A)
5	GND	GND	GND
6	DSR	RTS-(A)	
7	RTS	RTS+(B)	
8	CTS	CTS+(B)	
9		CTS-(A)	



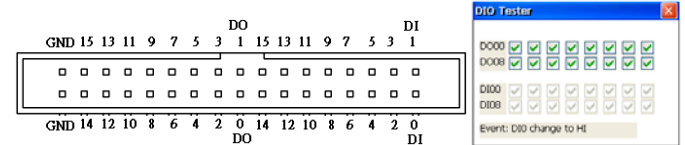
<SerCon>



<SerPerf>

<SerPerf analysis result>

DIO (0: voltage 0, 1: voltage 3.3V)



Software Specifications (WinCE5.0)

Protocol Stack: TCP, UDP, IPv4, SNMP, ICMP, IGMP, ARP, HTTP, CHAP, PAP, SSL, DHCP, SNTP, SMTP*, Telnet, FTP, PPP
System Utilities: Windows command shell, telnet, ftp, web-based administration manager
Supporting Services and Daemons: Telnet Server, FTP Server, Web Server

(httpd), Dial-up Networking Service
Device Drivers: CF Card, USB, Watchdog Timer, UART, VGA, Audio
 (*support by WinCE professional)

Connect your workstation with JetBox 8210

- Via serial cable and Activesync**
- Download and Setup Microsoft ActiveSync version 3.8 or above (<http://www.microsoft.com/downloads/>) in your PC.
 - Use a **Serial cable** to connect JetBox 8210 to your PC.
- Via network**
- User network & dial up connection

Application Development: Microsoft eMbedded Visual C++4.0

- Step1: Setup Platform SDK**
- Launch the Platform SDK setup file (.msi) to start setup wizard in your PC.
- Step2: Create Your Own Application with eVC++4.0.**



Download Your Own Application Program to JetBox 8210

- Via ActiveSync**
- Before downloading the application, make sure the ActiveSync connectivity has been established successfully between your workstation and JetBox8210.
 - Select **Tools | Explore** to manage files

Via CF card
 The application program can be copied to the **CF card** (under storage card folder), and be executed in JetBox directly.

Autorun list (in \My Device\Windows)

- ◆ First, launch AutoRun.lnk of JetBox 8210. go to [\Windows\AutoRun.lnk](#).
- ◆ You could type the file directory directly or you could click "Find" button to search the application you want to add into autorun list. Click **New** and then **Save & Exit**



Copyright@2007
Korenix Technology Co., Ltd.
 All rights reserved.
 Reproduction without permission is prohibited.



Customer Service: KoreCARE@korenix.com