

korenix

JetPort 5208 / 5216 Rackmount Serial Device Server
Quick Installation Guide v1.0

1. Package Contents

The complete Package:

- ▶ JetPort 5208 or JetPort 5216 Serial Device Server
- ▶ Power Cord
- ▶ Rack Mount Kit (Brackets and Philips Head Hex M3 x 8 screws)
- ▶ Foot Pad Set (4 pcs.)
- ▶ Documentation and Software CD-ROM
- ▶ Quick Installation Guide

2. Optional Accessory

- ▶ CM9RJ45, Serial Cable (RJ45 to DB9 male, 150cm)

3. JetPort 5208 / JetPort 5216 (Front View)

- A. Port LEDs
 - B. Reset Switch
 - C. 10/100 Mbps Data LED
 - D. Link LED
 - E. Power
- The diagram shows the JetPort 5216 model.

The JetPort 5208 only has one row LEDs

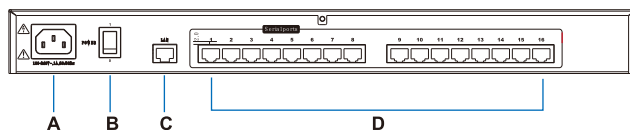


4. JetPort 5208 / JetPort 5216 (Rear View)

- A. Power Socket
- B. Power Switch
- C. LAN Port
- D. Serial Port

The diagram shows the JetPort 5216.

The JetPort 5208 only has 8 serial ports.

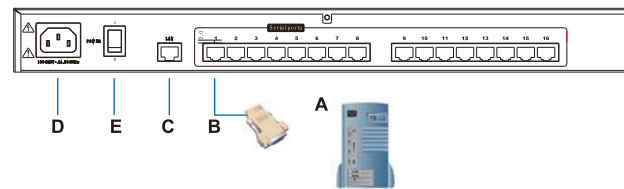


5. System Requirements

- ▶ Sun's Java 2 JRE 1.4.2 or higher must be installed on your computer. Java is available for free download from the Sun Java website: <http://java.sun.com>
- ▶ The devices that connect to the JetPort 5208 / JetPort 5216 must support RS-232 terminal operations
- ▶ Real (Virtual) COM port driver support requires Windows 2000 or higher

6. Installation

- A. For each server or serial device, plug an RJ-45 to serial cable into its serial port.
- B. Use CM9RJ45 Serial cable to connect any available port on the JetPort 5208 / JetPort 5216 rear panel.
- C. Plug the standard ethernet cable that connects the JetPort 5208 / JetPort 5216 to the network or the Internet into the RJ-45 socket.
- D. Use the AC power cord provided with this package to connect the JetPort 5208 / JetPort 5216 Power Socket to an AC power source.
- E. Turn on the JetPort 5208 / JetPort 5216.
- F. Turn on the computers.



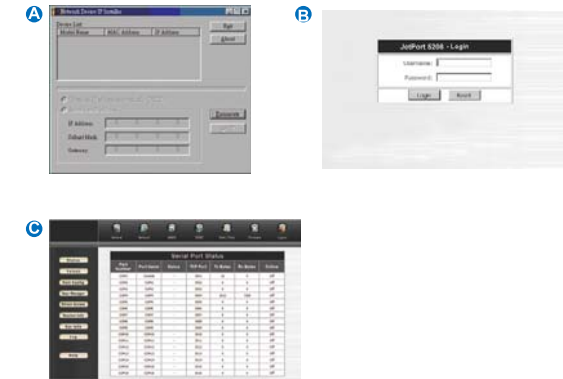
7. Operation

The most convenient way to operate the JetPort 5208 / JetPort 5216 is with an internet browser.

- A To ascertain and set an IP address for the JetPort 5208 / JetPort 5216:
 - ▶ Default IP: 192.168.10.2
 - ▶ Click "Enumerate" to refresh the Device List if necessary
- B 1. Open your browser and specify the IP address of the JetPort 5208 / JetPort 5216 you want to access in the browser's URL location bar.
2. A Security Alert dialog box appears. Accept the certificate. A login dialog box, like the one below, appears:
3. Provide a valid Username and Password (set by the JetPort 5208 / JetPort 5216 administrator), then Click Login to continue.

If you are the administrator, and are logging in for the first time, use the default Username: **admin**; and the default Password: **admin**.
Note: For security purposes, we strongly recommend you remove these and give yourself a unique Username and Password with the appropriate Administrator permissions. This setting can be found under "General" setting in the main screen.

- C After you have successfully logged in, the JetPort 5208 / JetPort 5216 Main Screen appears:



8. Pin Assignments

RJ45	Pins(8)
RTS	1
DTR	2
TXD	3
CTS	4
GND	5
RXD	6
DCD	7
DSR	8

Korenix Technology Co., Ltd.

Tel: +886-2-89111000

Fax: +886-2-29123328

Business service: sales@korenix.com

Customer service: koreCARE@korenix.com

CPQ000P5208000